

# Specifications



## Physical Characteristics

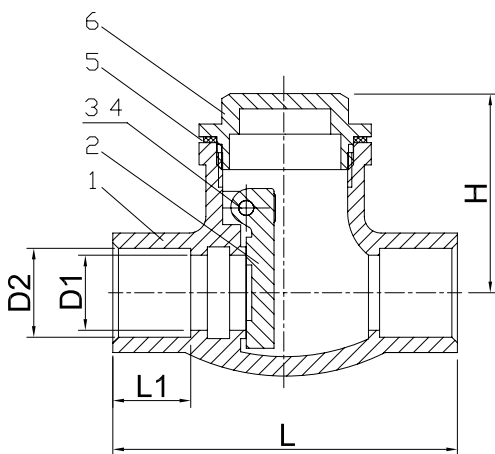
- Description: Swing Check Valve - Brass
- Connection Type: Solder x Solder
- Max. Operating Temp. Rating: 200° F
- Max. Operating Pressure Rating: 200 PSI non-shock WOG
- This product complies with 0.25% weighted average lead content on wetted surfaces
- Meets ANSI/NSF 61 Low Lead Requirements

## Certifications

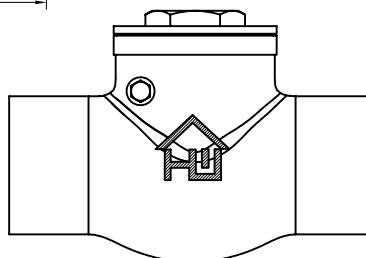


240-4-12-12  
240-4-34-34

PART NO.	SIZE	L		L1		D2		H		D1		WEIGHT g
		mm	In.	mm	In.	mm	In.	mm	In.	mm	In.	
240-4-12-12	1/2"	62	2.4	14	.55	15.93-16.03	0.627-0.631	38	1.5	13.5	0.5	195.0
240-4-34-34	3/4"	81	3.2	19	.75	22.28-22.38	0.878-0.882	41	1.6	18	0.7	272.2



NO.	DESCRIPTION	MATERIAL
1	Body	Brass
2	Disc	Brass
3	Rod	Brass
4	Screw	Brass
5	Washer	Teflon
6	Bonnet	Brass



\*Image may vary slightly from actual product